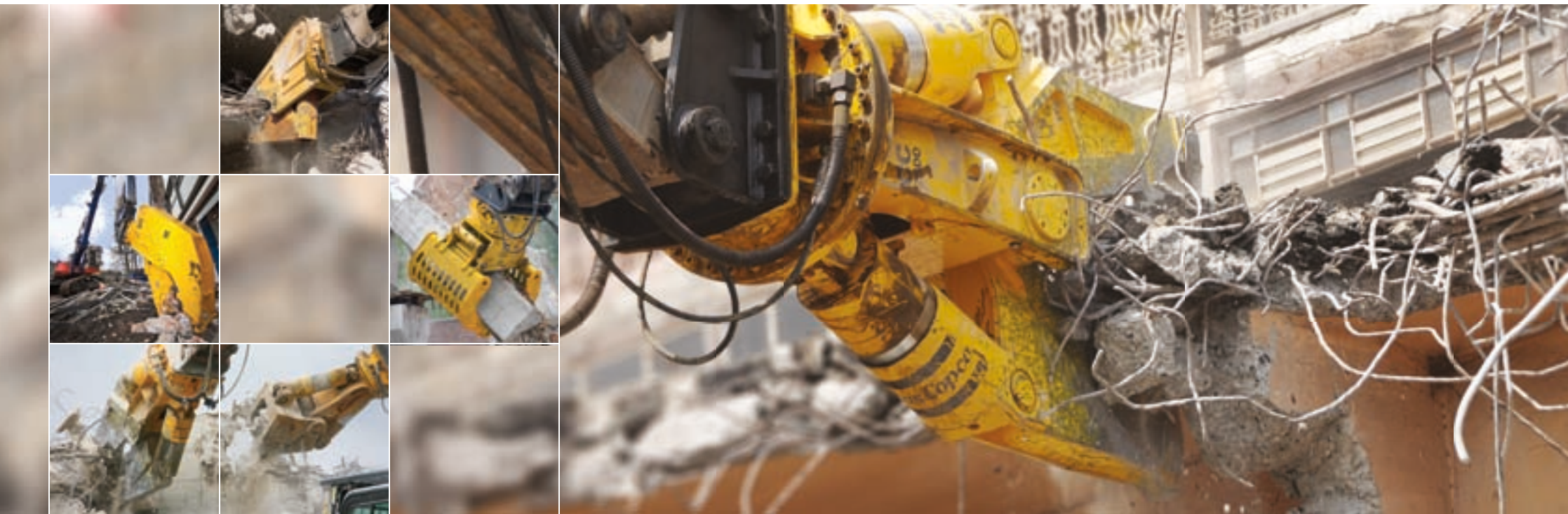


Atlas Copco silent demolition tools
Powerful, fast, cost-efficient



Sustainable Productivity

Atlas Copco

EXPERIENCE THE REAL POWER

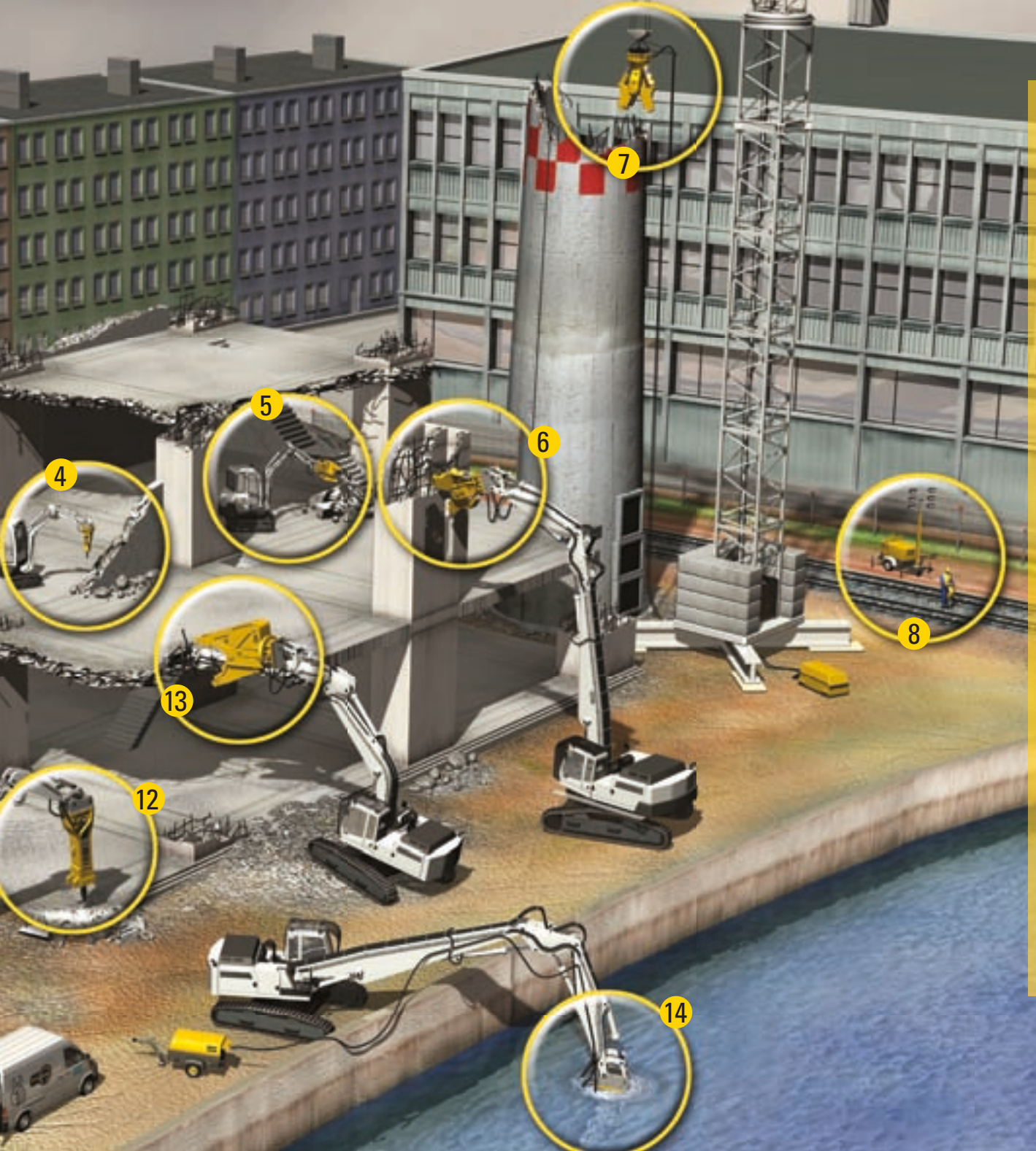
Demolition tools for demanding jobs

Concrete production rose dramatically in the 50s and reached its high point at the start of the 70s. Based on an average service life of structures of 50 to 70 years there will be a drastic increase in demolition waste in the first 20 years of this century. The EU directive on waste management (Nov 2008) sets a recycling quota of 70% for construction and demolition waste by year 2020.

Sorting, loading and recycling can be an obligation but also an opportunity: with landfill costs rising, recycling building materials has become a profitable business.

Take your share in this growing business with targeted machines and equipment that turn mechanised demolition into a fast, cost effective and precision process. Wherever contractors need to minimize noise and vibration during demolition, guarantee high precision in selective demolition jobs, or deal with concrete, rebar and even steel girders in one and the same process, Atlas Copco's silent demolition tools provide the answer.





- 1 Demolition of masonry with an MG multi-grapple
- 2 Cutting a steel structure with a CC combi cutter
- 3 Light demolition with a pneumatic TEX breaker
- 4 Demolition of a concrete wall with an SB hydraulic breaker
- 5 Demolition of concrete elements with a small CC combi cutter
- 6 Using a CC combi cutter on a long boom to demolish high structures
- 7 Reverse construction of a chimney stack with a CC combi cutter
- 8 Repair and maintenance with a Cobra petrol breaker
- 9 Service and inspection according to the 1+2 extended warranty program
- 10 Sorting and loading with an MG multi-grapple
- 11 Secondary reduction and separation of concrete and rebar with a BP bulk pulveriser
- 12 Demolition of heavy foundation with an HB breaker
- 13 Primary demolition of reinforced concrete structures with a DP demolition pulverizer
- 14 Underwater demolition with an HB breaker
- 15 Downsizing and screening of demolition material with a mobile crusher
- 16 Compaction of recycled demolition material with a forward-reversible plate



SILENT DEMOLITION TOOLS BREAK ALL LIMITS

Powerful and fast silent demolition tools



Atlas Copco's full range of hydraulic demolition tools covers the whole process from breaking and crushing to downsizing, sorting and loading. These powerful low-noise, low-vibration attachments turn mechanized demolition into a fast, cost-efficient and precision process.

Give your **productivity** a strong power boost

Atlas Copco's combi cutters, pulverizers and grapples offer a great combination of high and constant crushing forces, short cycle times and high availability.

For high precision in selective demolition and stripping out jobs they are fitted as standard with 360° hydraulic rotary drives with overload protection.

Their slim, application oriented design is as light as possible, but as robust as needed for rough and tough jobs.





Those searching for **power and speed** need look no further

Get the job done faster! The design concept of Atlas Copco Silent Demolition Tools offers extremely high breaking force with short opening/closing time whereas breaking force is primer. Big cylinders provide constantly high breaking force - if you can break the material with only one bite instead of two you save time. This means: less machine hours, less fuel consumption, less operator hours.

High **availability**, shift after shift...

Atlas Copco silent demolition tools are amongst the most robust attachments on the market. The design of the entire product range is intended for intense and long term use with high throughput performance and loads.

Modular concepts, like the combi cutter concept, allow a usage as a general-purpose tool. Tailor-made maintenance kits help to keep service and maintenance times on a low level.



GET A REAL GRIP ON COSTS

Atlas Copco products are designed to offer highest productivity at lowest operating cost: lower energy & fuel consumption, machine & operator cost, service & maintenance cost will help to keep the total cost of ownership down.

Total cost of ownership are all costs generated by a piece of equipment throughout its lifetime. They can normally be divided into investment costs and operating costs.

Investment costs are fixed costs, such as purchase price, depreciation and interest. They begin to occur when the attachment is purchased and do not end until it is sold.

Operating costs are variable costs and they start as soon as the attachment is running. They vary according to age, application, environment and maintenance policies. They are directly related to the length of the equipment's lifetime.

Concrete and steel are no longer a challenge

EXCELLENT HANDLING - thanks to 360° hydraulic rotary drive as standard

FAST - speed valves shorten the working cycle time thus less fuel consumption during operation

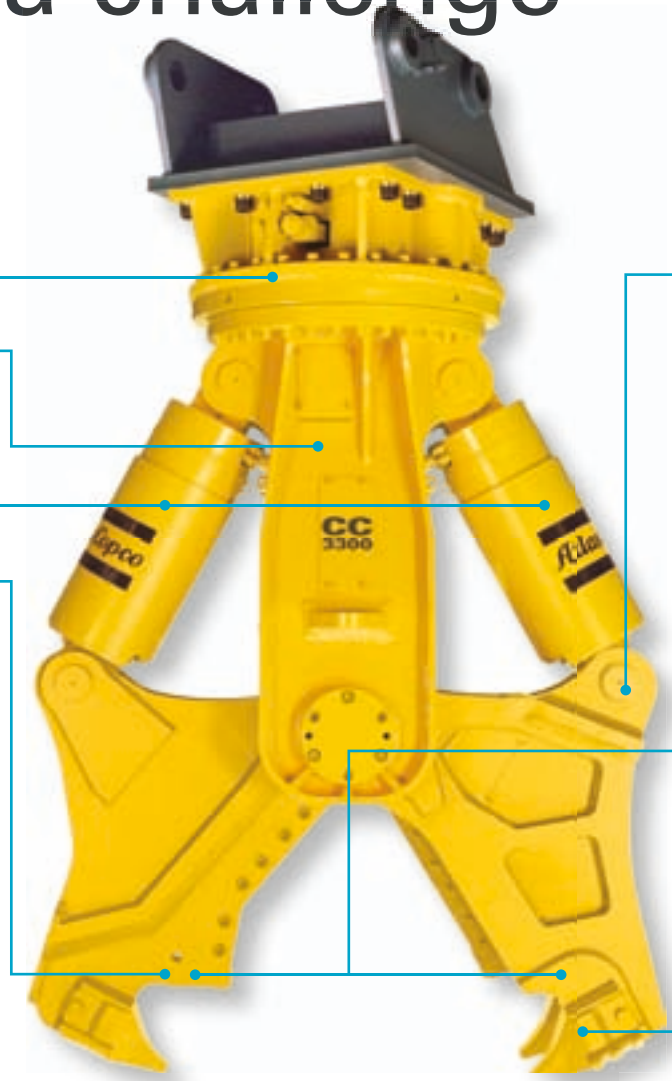
STRONG - two powerful hydraulic cylinders deliver virtually constant closing force

ROBUST - the combination of a single-blade and double-blade jaw both fitted in a very robust cutter body offer maximum stability under extreme strain

Optional

An automatic lubrication device helps to increase productivity by providing continuous lubrication and to avoid downtimes for manual lubrication

Box shape jaws (only for CC 3300) for applications in recycling yards



MODULAR - the CC design concept allows easy change of jaws according to application. Thanks to CAPS, the Atlas Copco Coupling and Positioning System, this can be done easily on the job site without expensive and time consuming transport into a workshop. Read more on page 13: "Bolt cage"

WEAR PART CONCEPT - teeth and blades can be exchanged on the job site thanks to an easy-replace-locking system

WIDE JAW OPENING - increases the volume per bite, saves time and makes the combi cutter suitable for more applications

HIGH FORCES ON JAW TIPS - high power at the jaw tips even when the jaw is almost closed. Helps to demolish structures with less bites



Combi cutter U-version

Applications for the U-version (universal)

- light- to medium-duty building demolition
- heavy-duty industrial demolition (heavily reinforced concrete)
- cutting steel profiles (general structural steels)
- secondary reduction
- material separation



Combi cutter S-version

Applications for the S-version (steel-cutting)

- demolition of steel structures (general structural steels)
- secondary reduction
- material separation



	2 moving jaws - 2 cylinders Atlas Copco CC 650 - CC 6000	Compared to 1 moving jaw - 1 cylinder concepts
DESIGN	The cylinder piston rods are fitted with tubular guards for all-round protection	There's no all-round protection for the piston rod. The piston rod may sustain damage from rebar
CLOSING FORCE	Virtually constant closing force. High closing force even when the jaws are almost closed <div style="text-align: center;"> </div>	Closing force falls away sharply. Disadvantage when cutting steel, as high force is required at end of closing cycle <div style="text-align: center;"> </div>
DISPLACEMENT FORCES	Each jaw moves independently No displacement forces on cutter and carrier Controlled demolition of unstable concrete walls. <div style="text-align: center;"> </div>	Load applied to cutter and carrier Displacement forces may cause unstable concrete walls to collapse unintentionally and put people at risk of injury. <div style="text-align: center;"> </div>

CC - COMBI CUTTERS

	CC 250	CC 650	CC 1700 U	CC 1700 S	CC 2500 U	CC 2500 S	CC 3300 U	CC 3300 S	CC 3300 B	CC 4700 U	CC 4700 S	CC 6000 U	CC 6000 S	
Carrier weight class ¹⁾	t	2-4	5-14	15-25	15-25	22-35	22-35	30-50	30-50	38-55	45-65	45-65	58-85	58-85
Service weight ²⁾	kg	240	630	1900	1750	2840	2550	3480	3280	4400	4750	4500	6500	6300
Jaw opening / max.	mm	360	450	740	370	860	400	1000	440	570	1300	710	1400	750
Jaw depth	mm	350	270	615	430	725	460	765	625	660	1080	860	1150	900
Blade length	mm	120	140	350	380	350	380	525	525	705	525	875	525	875
Cutting force - upper blades	t	66	-	225	225	370	370	510	510	510	620	620	830	830
Cutting force - jaw tip	t	-	-	-	79	-	130	-	141	-	-	198	-	205
Crushing force - jaw tip	t	18	45	57	-	90	-	109	-	145	155	-	180	-
Operating pressure	bar	200	350	350	350	350	350	350	350	350	350	350	350	350
Oil flow	l/min	30-50	90-180	150-250	150-250	150-250	150-250	220-350	220-350	220-350	350-450	350-450	450-550	450-550
Closing cycle ³⁾	sec.	2,9	3,4	1,6	1,6	2,9	2,9	2,8	2,8	2,8	3,2	3,2	4	4
Opening cycle ³⁾	sec.	2,2	2,6	1,7	1,7	3,1	3,1	3,0	3,0	3,0	3,7	3,7	4	4
Max. operating pressure, rotation	bar	200	210	210	210	170	170	170	170	170	170	170	170	170
Oil flow, rotation	l/min	mech.	25	30	30	30	30	30	30	30	50	50	50	50

Performance

¹⁾ DIN 1025 T1	mm			240	280	240	300	360	400	80	400	450	400	500
¹⁾ DIN 1025 T2	mm			160	180	160	200	240	260	-	240	300	240	360
¹⁾ DIN 1026	mm			220	300	240	320	400	400	80	400	400	400	400
¹⁾ DIN 1028	mm			150/150/20	160/160/20	160/160/22	200/200/24	250/250/24	250/250/24	80/40/8	250/250/25	250/250/25	250/250/25	250/250/25
²⁾ Reinforcement DIN EN 10080	mm	1xØ24	2xØ28	7xØ28	9xØ28	10xØ28	14xØ28	18xØ28	20xØ28	10xØ28	13xØ32	15xØ32	18xØ32	20xØ32

1) Weight apply to standard carriers only. Any variations must be agreed with Atlas Copco and / or the carrier manufacturer.

2) Combi Cutter with medium - sized adapter.

3) With max Oil flow.

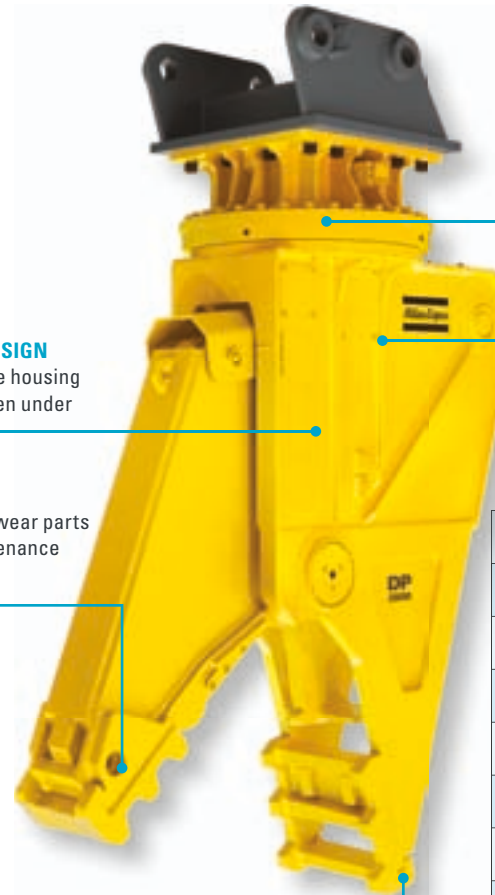
4) Limitation of cutting steel.

U = with universal jaws
 S = with steel cutting jaws
 B = box shape version

Combining demolition and pulverizing

Atlas Copco's demolition pulverizers, although conceived first and foremost for primary demolition of concrete and rebar, ideally combine the characteristics of a demolition attachment with an excavated material pulverizer.

The universal use of the DP demolition pulverizer for concrete pulverization work in both primary and secondary demolition reduces both investment and operation costs.



EXTREMELY ROBUST DESIGN of the moving jaw and the housing for longer service life even under extreme stresses

SIMPLE replacement of wear parts for quick and easy maintenance

HIGH BREAKING FORCES AT TIP, enabling rapid process

HYDRAULIC ROTATION DRIVE for excellent handling

SPEED VALVE for short opening and closing cycle

DP DEMOLITION PULVERIZER

		DP 2000	DP 2800
Carrier weight class ¹⁾	t	18 – 27	25 – 35
Operating weight ²⁾	kg	2050	2850
Max. cutting force	t	265	320
Crushing force, jaw tip	t	85	100
Oil flow rate	l/min	150 – 250	250 – 350
Operating pressure, rotation	bar	150 – 220	150 – 220
Jaw width	mm	460	480
Jaw opening	mm	780	965
Jaw depth	mm	810	930
Blade length	mm	190	350
Part number		3363 0974 01	3363 0925 01

Data at 350 bar operating pressure

1) Weights apply to standard carriers only. Any variances must be agreed with Atlas Copco and/ or the carrier manufacturer prior to attachment.

2) With medium-sized adapter



BULK PULVERIZERS THE FINISHING TOUCH

Design follows function

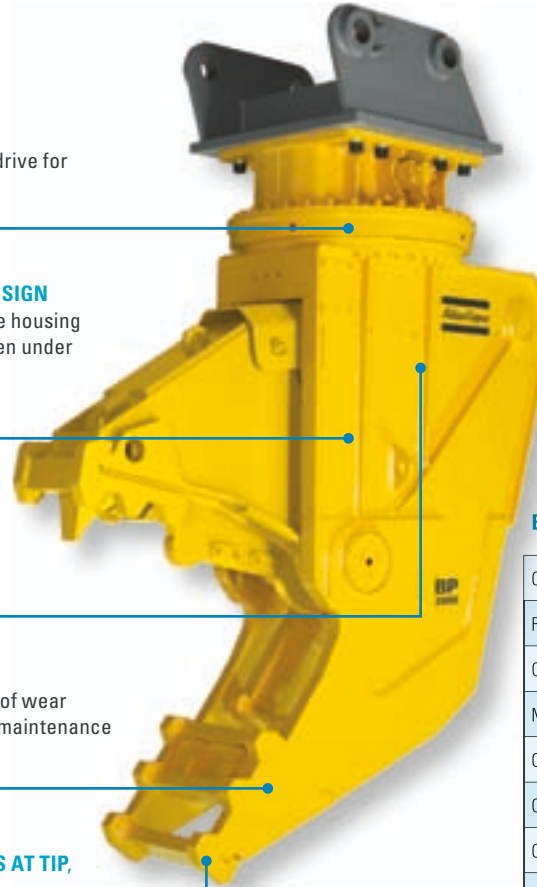
HYDRAULIC ROTATION drive for excellent handling

EXTREMELY ROBUST DESIGN of the moving jaw and the housing for longer service life even under extreme stresses

SPEED VALVE for short opening and closing cycle

SIMPLE REPLACEMENT of wear parts for quick and easy maintenance

HIGH BREAKING FORCES AT TIP, enabling rapid process



Thanks to their angled shape, the Bulk Pulverizers are ideal for secondary demolition and additional reduction of reinforced concrete elements: the broad swan-necked jaw makes it easy to feed in demolition material on the ground, which helps to speed up work and enables the clean separation of rebar and concrete and their subsequent reduction into grain sizes suitable for crushing or use as backfill.

The hydraulic rotation drive also makes it possible to use the BP for a more efficient primary demolition of ceilings and walls. Another proof of a very functional design!

New teeth in no time

Wear parts (crushing teeth, tooth plates, cutting blades) can be replaced simply on site, which reduces downtimes and transport cost to repair shop.



BP BULK PULVERIZER

		BP 2100		BP 2900	
Carrier weight class 1)	t	16 – 27	18 – 27	23 – 35	25 – 35
Rotary drive		No	Yes	No	Yes
Operating weight 2)	kg	2020	2145	2740	2930
Max. cutting force	t	240	240	362	362
Crushing force, jaw tip	t	80	80	114	114
Oil flow rate	l/min	150 – 250	150 – 250	250 – 350	250 – 350
Operating pressure, rotation	bar	-	150 – 220	-	150 – 220
Jaw width	mm	470	470	480	480
Jaw opening	mm	795	795	950	950
Jaw depth	mm	800	800	870	870
Blade length	mm	190	190	350	350
Part number		3363 1009 77	3363 0969 01	3363 1009 73	3363 0996 01

Data at 350 bar operating pressure

1) Weights apply to standard carriers only. Any variances must be agreed with Atlas Copco and/ or the carrier manufacturer prior to attachment.

2) With medium-sized adapter

Sort and recycle all fractions

Atlas Copco's multi grapple concept is offering low operating weight with high gripping volume. Maximum loading performance and high gripping force help to increase the demolition performance as well.



EXCELLENT HANDLING - thanks to 360° hydraulic rotary drive as standard

HIGH CLOSING FORCE - two powerful hydraulic cylinders deliver virtually constant closing force (from MG 1000 upwards)

SAFE HANDLING OF GRIPPED MATERIAL - thanks to two rotation engines (from MG 1000 upwards)

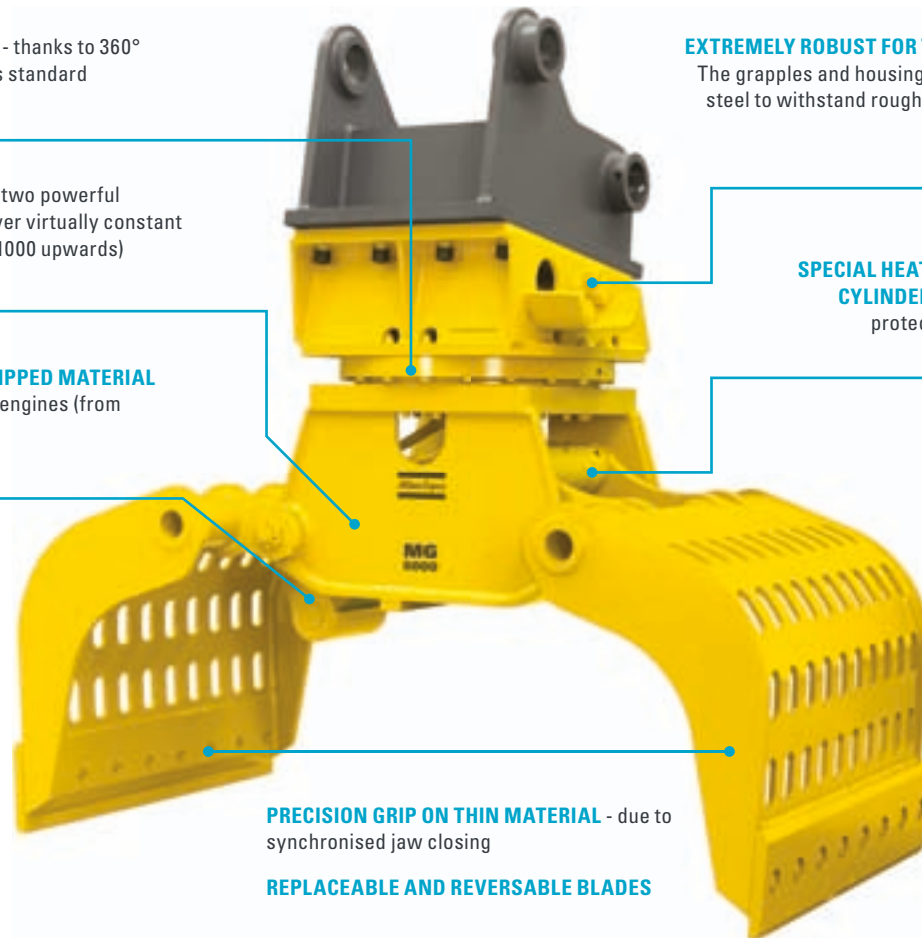
EXTREMELY ROBUST FOR THE THOUGHTEST JOB
The grapples and housing are made of HARDOX steel to withstand rough and tough conditions.

SPECIAL HEAT TREATED CHROMED CYLINDER RODS provide better protection against damages

HIGH CAPACITY

PRECISION GRIP ON THIN MATERIAL - due to synchronised jaw closing

REPLACEABLE AND REVERSABLE BLADES





APPLICATIONS:

- Precision demolition and sorting of various material on jobsites, up to loading the trucks
- Metal scrap handling, sorting and loading
- Landscaping, logging, tree removal from roots as well as loading wood chippers
- Recycling yards, sorting and loading
- Ship demolition
- Disaster sites, removing material and debris

MG MULTI GRAPPLES

		MG 100	MG 200	MG 300	MG 400	MG 500	MG 800	MG 1000	MG 1500	MG 1800	MG 2100	MG 2700	MG 5000
Carrier weight class ¹⁾	t	0,7-1	03-jan	05-feb	08-apr	09-maj	16-sep	20-dec	17-28	20-28	25-35	28-50	50-80
Service weight ²⁾	kg	90	175	290	450	460	825	925	1480	1780	2100	2710	5300
Max. closing force	t	0,1	1,5	2,3	2,3	2,4	3,8	4,7	7	7	8,5	9,2	13
Oil flow rate	l/min	20-40	20-40	20-40	35-50	35-50	70-100	85-120	120-170	130-180	180-200	160-220	300-350
Operating pressure, rotation	bar	120-150	120-150	120-150	120-150	120-150	150-210	150-210	150-210	150-210	150-210	150-210	210-250
Capacity	l	30	70	100	150	200	400	500	800	850	900	1000	1600
Jaw opening	mm	600	750	1100	1400	1500	1700	1950	2100	2100	2300	2200	3000
Grapple width	mm	300	450	500	600	700	800	800	1000	1200	1200	1200	1500
Part number		3363 1036 50	3363 1036 51	3363 1036 52	3363 1036 53	3363 0982 20	3363 0982 21	3363 0982 22	3363 0982 23	3363 0982 24	3363 1036 54	3363 0982 25	3363 1036 55

Data for MG 100 - MG 500 at 300 bar, MG 800 - MG 5000 at 350 bar operating pressure

1) Weights apply to standard carriers only. Any variances must be agreed with Atlas Copco and/or the carrier manufacturer prior to attachment. 2) with medium-sized adapter, without extra blades

THE BEST PARTS FOR GREAT EQUIPMENT

Keep your machines performing

An Atlas Copco silent demolition tool is more than just a tool - it's an overall concept which includes a full line of aftermarket products and services. Each product fits to the demolition tool perfectly and keeps it chewing and chewing.

ONE JOB, ONE PART NUMBER

Genuine Atlas Copco maintenance kits contain the essential wear parts including all the required fasteners like washers, nuts, locking bolts and rings. Atlas Copco offers one part number for one job which simplifies your logistic processes.

Always replace crucial wear parts in time. This will help to prevent breakdowns and costly consequential damages suffered by main machine components. A preventive exchange of wear parts also keeps the machine's productivity and availability on a high level.

BP BULK PULVERIZER	Blades	Tooth plate (housing)	Tooth plate recycling (arm)	Demolition tooth plate
BP 2100	3363 0982 62	3363 0982 63	3363 0989 65	3363 0982 64
BP 2900	3363 0982 00	3363 0982 01	3363 0989 66	3363 0982 02

DP DEMOLITION PULVERIZER	Blades	Tooth plate (housing)	Tooth plate demolition (arm)	Recycling tooth plate
DP 2000	3363 0982 62	3363 0982 63	3363 0982 64	3363 0989 65
DP 2800	3363 0982 00	3363 0982 01	3363 0982 02	3363 0989 66

CC COMBI CUTTER	Blades	Teeth	Sliders
CC 1700 U	3363 0983 77	3363 0910 58	-
CC 1700 S	3363 0983 78	-	3363 0983 79
CC 2500 U	3363 0982 69	3363 0910 58	-
CC 2500 S	3363 0943 97	-	3363 0982 72
CC 3300 U	3363 0910 65	3363 0910 66	-
CC 3300 S	3363 0910 68	-	3363 0910 69



MG MULTI GRAPPLE	Part number
Set of blades MG 100	3363 1061 23
Set of blades MG 200	3363 1060 52
Set of blades MG 300	3363 1062 46
Set of blades MG 400	3363 1062 47
Set of blades MG 500	3363 0982 81
Set of blades MG 800 / MG 1000	3363 0982 82
Set of blades MG 1500	3363 0982 83
Set of blades MG 1800/2100	3363 0982 84
Set of blades MG 2700	3363 0982 85
Set of blades MG 5000	3363 1036 88



CHANGING THE JAWS - A PIECE OF CAKE

Thanks to CAPS*, the coupling and positioning system, the two cutter jaws can be fitted and removed as a modular unit. CAPS connects the jaws even after they have been removed and facilitates refitting through a special guide system. This means that it is possible to replace the cutter jaws quickly and easily on site, avoiding the need for time-consuming and costly transportation to a workshop.

BOLT CAGE

The bolt cage allows cutter jaws to be replaced rapidly. It simplifies handling on site and shortens change-over times.

CC COMBI CUTTERS

Part number

CC 1700	3363 0946 47
CC 2500	3363 0945 42
CC 3300	3363 0946 48



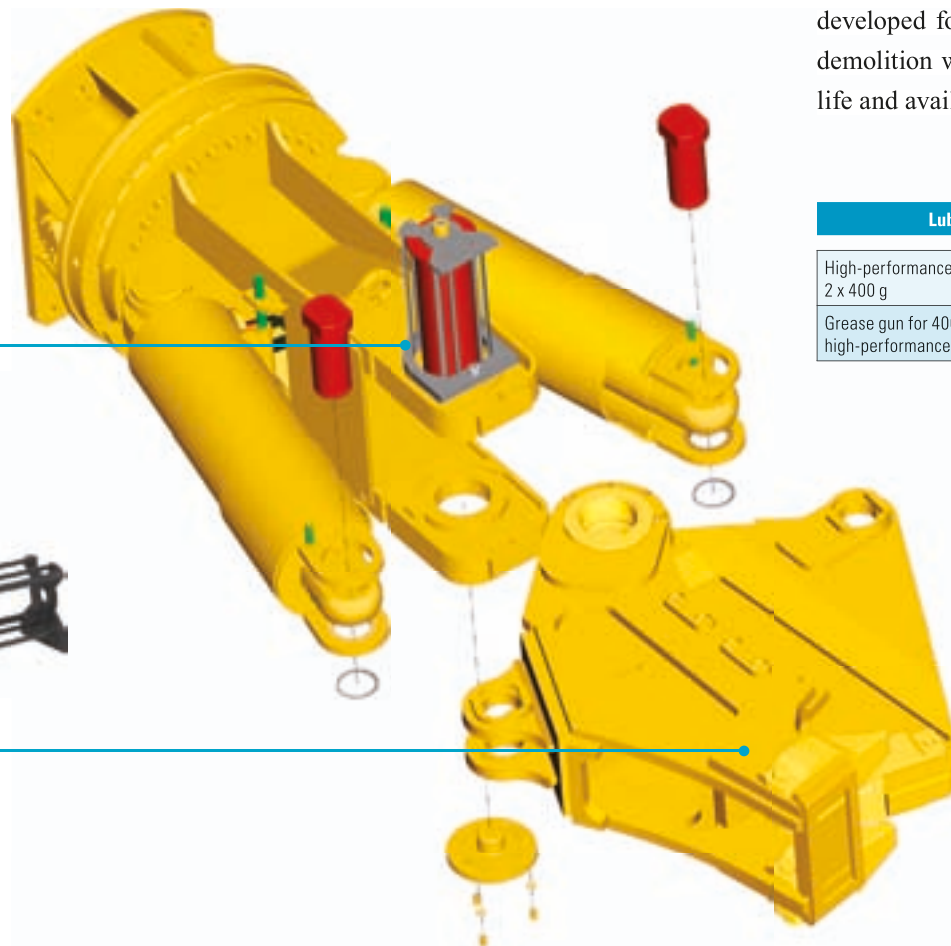
CC COMBI CUTTERS

U-version

S-version

CC 1700	3363 0998 21	3363 1022 01
CC 2500	3363 0931 17	3363 0993 03
CC 3300	3363 0924 97	3363 0902 01

*Coupling and Positioning System



LUBRICANTS

Genuine Atlas Copco greases are especially developed for equipment used in heavy-duty demolition work. They offer a longer service life and availability of your equipment.

Lubricants	Part number
High-performance grease 2 x 400 g	3363 0949 14
Grease gun for 400 g high-performance grease	0909 1071 00

EXPERIENCE THE **REAL POWER**

More tools to power your **demolition**

TEX PE PNEUMATIC HAMMERS

Discover Atlas Copco's TEX PE hammer range with Two-hand vibro-reduction.

Featuring a new vibro-reduced housing, vibrations are dampened throughout the whole hammer body. Compared to standard hammers, the operator experiences less vibrations in both hands when using any of the different surfaces of the machine.

With their innovative design, the TEX PE models offer enhanced operator comfort while maintaining the renowned performance of their predecessors.

HYDRAULIC HANDHELD TOOLS

Hydraulic tools should come with a warning: once you've tried them, you're going to want them. Why? Because hydraulic tools pack a punch. They don't look that big and they are not that loud, but once you open the throttle and feel that bite, you will be convinced.

Rental companies, utilities and other organizations appreciate hydraulics for a different reason: hydraulics cost less to purchase and less to service. In other words, they cut the cost of ownership.

COBRA™ PETROL DRIVEN HAMMERS AND BREAKERS

The Cobra™ breaker is a machine you can just grab and go. That's because it's petrol-driven, so you don't need any compressors, hoses or cables.

The Cobra™ breaker is great for small, quick-bite jobs. Or fencing where you have to move down a line. Or for working in remote, inaccessible locations. In fact, the Cobra™ is so practical that it has become a fixture for emergency services around the world.



LIGHT HYDRAULIC BREAKERS

What makes the Atlas Copco SB breakers so unique is the Solid Body concept, which integrates the percussion mechanism and guide system into one single block of steel.

This unique design makes these breakers extremely compact and easy to handle and it also yields a weight reduction of 20% compared to other breaker types. It is true that SB stand for Solid Body concept but in fact it actually means lower lifecycle cost for users.

Thanks to this concept, the uncontested benefits of the SB breakers are reliability, flexibility, high productivity and low maintenance.

MEDIUM HYDRAULIC BREAKERS

Atlas Copco medium breakers are ideal for roadwork, trenching, general demolition and in all other jobs which call for a robust design, reliability and long life.

Their design makes use of advanced technologies to achieve the highest performance at the lowest cost.

Due to the MB breaker's high percussive performance to weight ratio, smaller carriers can be used, which can result in fewer investments and a lower cost of ownership.

HEAVY HYDRAULIC BREAKERS

The HB breaker range was developed to get even the toughest and hardest jobs done. It's a genuine heavy duty tool designed for millions of hits under the harshest conditions; a real production machine for 24/7 operation.

Many unique features help to achieve maximum productivity and minimum downtime:

AutoControl controls the breaker to suit the working conditions. PowerAdapt helps to prevent hydraulic overloading of the breaker. ContiLube offers optimal and cost-efficient lubrication. DustProtector II protects the percussion mechanism against stone dust and foreign objects. The VibroSilenced system helps to lower noise emissions and vibrations.

You will find most of these features also in MB breakers.





www.atlascopco.com