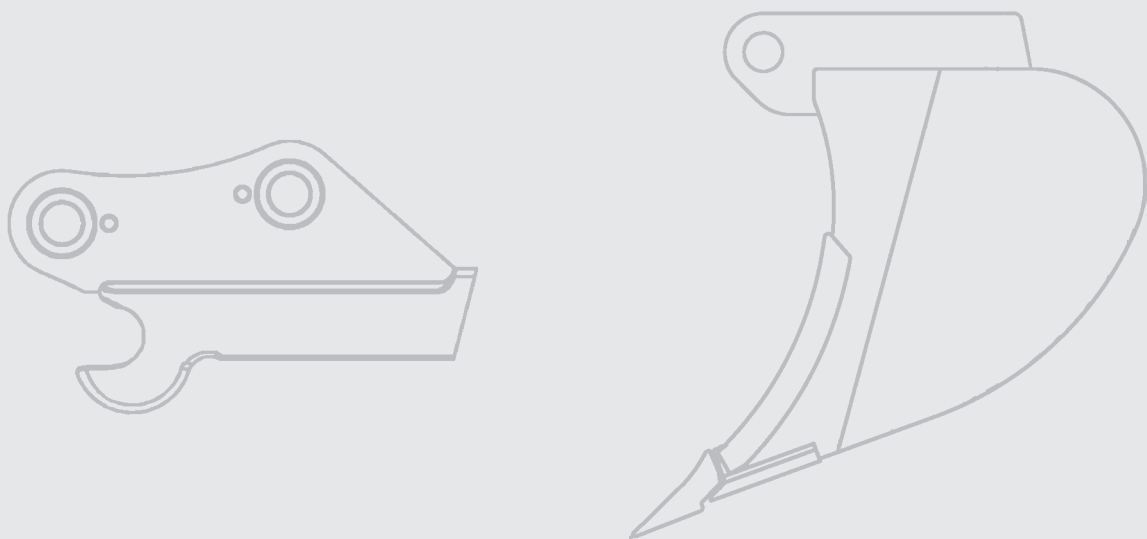


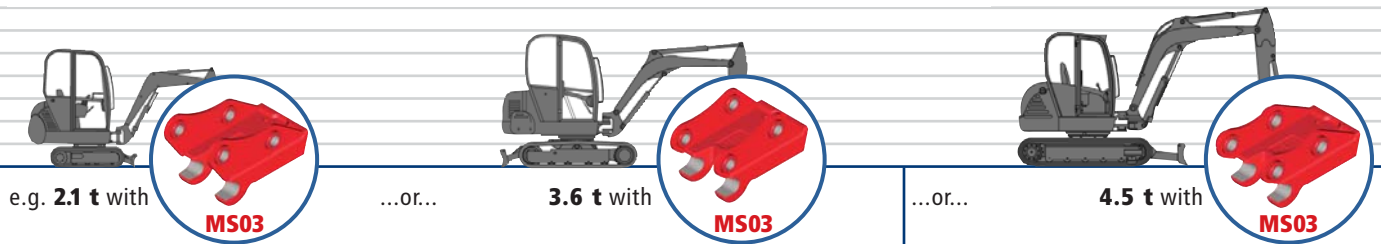


Lehmatic[®] Quickcoupler Systems and Attachments for Mini-Excavators and Compact Excavators.



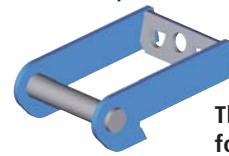
Unique Lehmatic® quickcoupler functionality so your excavator can tackle any job.

Lehmatic® MS03 with a choice of excavator suspensions.

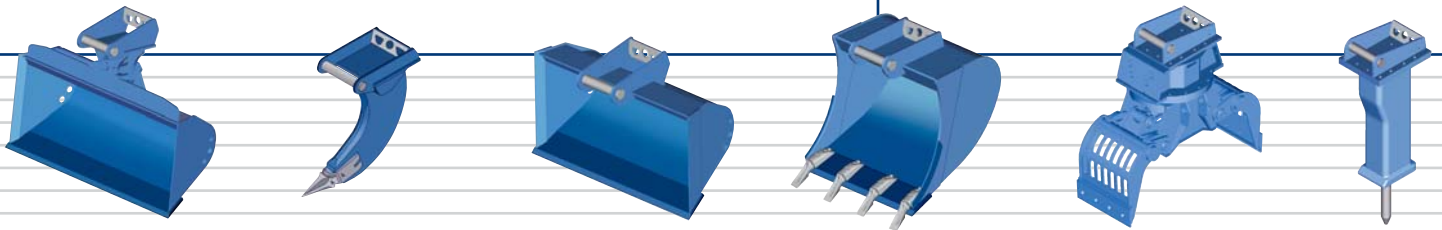


Example: MS03 2 – 5 t excavator category

Get the job done more efficiently, and convert mini and compact excavators into multifunctional tool carriers with the Lehmatic® quickcoupler system – for any bucket, grab or demolition tool in a specific category. In addition, the flexible and universal adapter system allows you to use all attachments whatever the brand or make of your excavator.

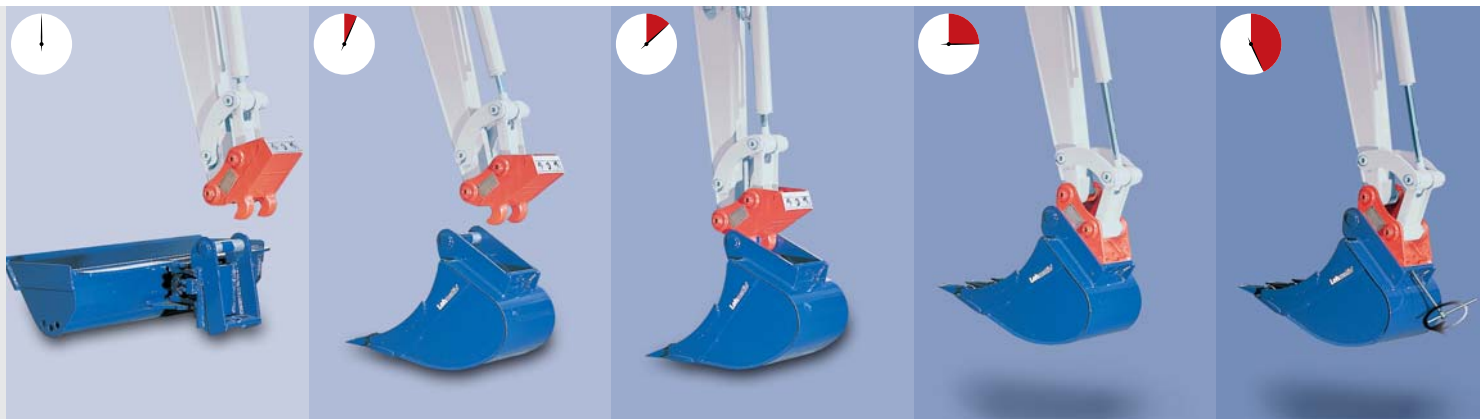


The SW 03 adapter size is identical for all attachments!



Bucket to ripper tooth, the Lehmatic® quickcoupler system makes any hydraulic excavator more flexible and more efficient.

Fast handling: Have the right attachment for the job ready in less than a minute.



Disengage...

...insert...

...engage...

...tilt...

...lock...

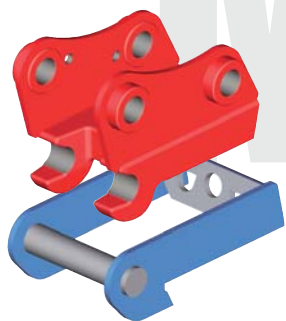
Fast and safe change of attachments, it only takes seconds with the Lehmatic® quickcoupler and makes for much higher profitability. Your advantages at a glance:

- Fast and safe change of attachments with the mechanical quickcoupler
- Extended service life and reliable operation even in rugged applications
- Expert know-how and top quality make for low operating costs

Excavator category	- 2 t	- 5 t	- 12 t
Quickcoupler			08
		03	
	01		
Adapter	SW 01	SW 03	SW 08

Lehmatic® quickcoupler technology for mini-excavators and compact excavators.

MS01/03



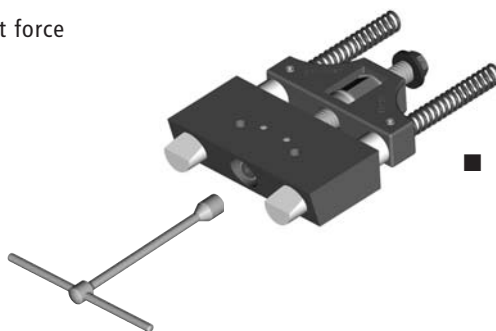
Lehmatic® advantages in detail

- Rugged steel housing with machined contact surfaces for extended service life
- Sealed lock mechanism for long life cycle and low maintenance requirements
- Patented lock system ensures safe and tolerance-free connection between quickcoupler and adapter
- Compact, low-design quickcoupler system reduces breakout force losses to a minimum
- Socket wrench locks fast, easily and safely



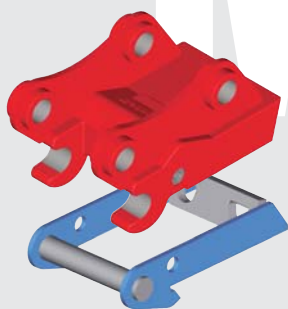
MS 01/03

- Self-locking mechanism sealed in housing



- Threaded spindle locks safely and easily

MS08

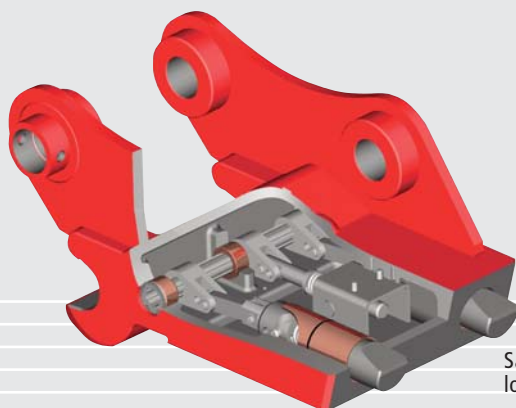


MS 08 rugged-design quickcoupler for your compact excavator

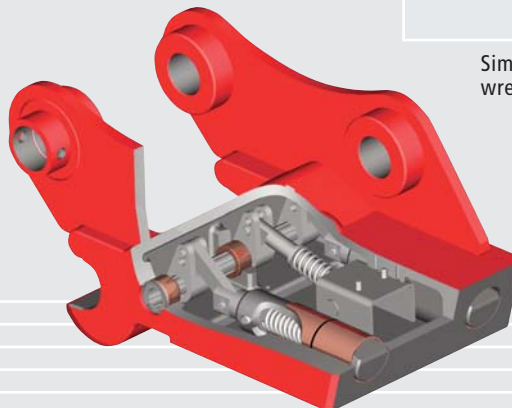
- Choice materials and precise machining for extended service life and maximum functional safety
- Top safety and enhanced durability – dead-center locking with automatically adjusting lock pins compensates tolerances between the quickcoupler and the adapter



Simple locking with socket wrench



Safe lock position - lock pins extended

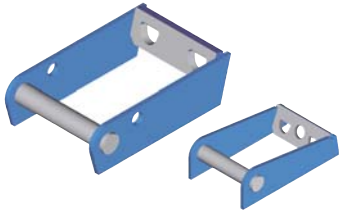


Protected lock components lock pins retracted

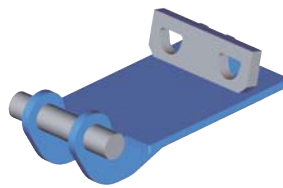
Customized to your requirements: Each attachment has its matching adapter.

Lehnhoff offers matching Lehmatic® adapters for all standard tools and attachments. The contact surfaces of the Lehmatic® quick-coupler to the adapter are mechanically machined for maximum operational safety and service life. The adapter front houses the coupling shaft for the quickcoupler claws, the rear accommodates the high-precision lock plate with its two characteristic bores. This guarantees a safe connection once the attachment is locked.

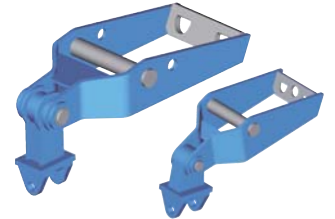
Adapter frames for backhoe buckets and bucket modification



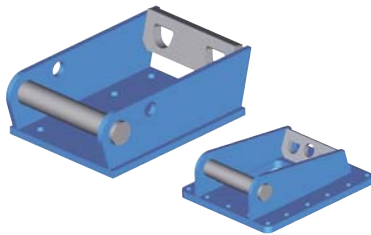
Adapter plate with inside suspension for narrow buckets



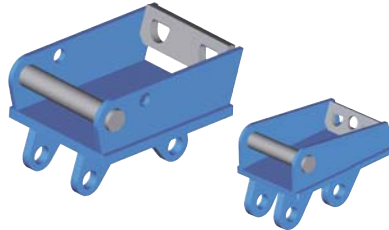
Grab adapters for mounting all types of grabs



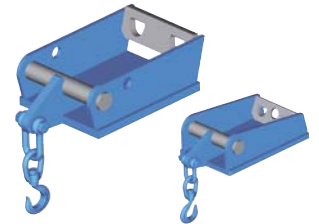
Screwed adapters for demolition tools such as hammers etc.



Duplex adapters for demolition tools with original suspension (bolted)



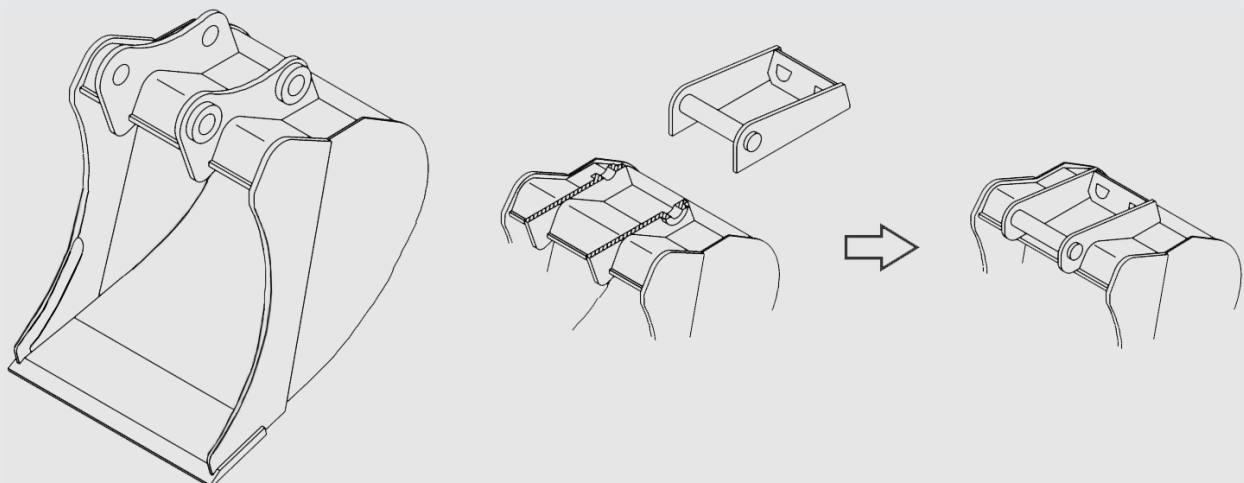
Special adapters, e.g. for load hooks



Lehmatic® specifications

Quickcouplers	MS01	MS03	MS08
Excavator category	0.7 – 2 t	1.5 – 5 t	5 – 12 t
Length [mm]	235	295	400
Width [mm]	180	200	290
Weight appr. [kg]	15	25	75
Adapter	SW 01	SW 03	SW 08
Adapter coupling shaft Ø [mm]	40	50	60

Existing attachments (e.g. backhoe buckets with original excavator suspensions) can easily be converted to accommodate Lehmatic® adapters. This simply requires removing the original suspensions and replacing them with the proven adapter frames. Ask for our detailed instructions or our Service department to assist you.

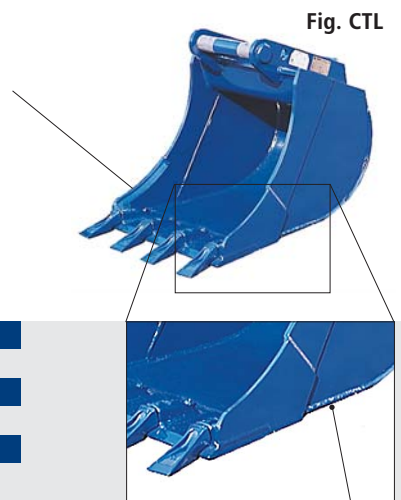
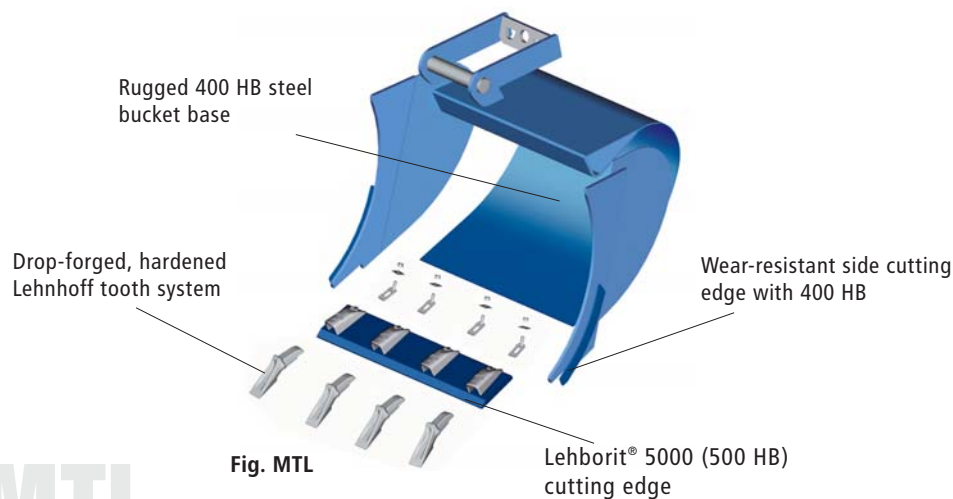


Fully equipped: Mini-excavator and compact excavator attachments.

Backhoe bucket

The MTL backhoe buckets for mini-excavators (0.8 to 5.0 t) and CTL backhoe buckets for compact excavators (6.0 to 12.0 t) meet the most stringent quality requirements:

- Rugged 400 HB steel bucket base
- Lehborit® 5000 (500 HB) cutting edge
- Side cutting edge with 400 HB wear-resistant sheets
- Projecting bucket base for extended service life
- Drop-forged, hardened Lehnhoff tooth system
- Biconical design for easy filling and reduced wear



Buckets for 0.8 – 5.0 t mini-excavators

Excavator	cutting width [mm] / SAE capacity [ltr.]					
MTL 1 0.8 – 1.5 t	260/30	300/35	400/40	500/60	600/70	
MTL 2 1.5 – 2.6 t	300/40	400/60	500/80	600/97	700/117	
MTL 3 2.6 – 3.5 t	300/56	400/75	500/100	600/127	700/153	800/180
MTL 4 3.5 – 5.0 t	300/66	400/96	500/130	600/162	700/195	800/230

Buckets for 5.0 – 12.0 t compact excavators

Excavator	cutting width [mm] / SAE capacity [ltr.]									
CTL 5 6.0 – 8.0 t	300/90	400/130	500/170	600/210	800/300	900/340				
CTL 10 8.0 – 10.0 t	300/105	400/155	500/200	600/255	800/360	900/410	1000/460			
CTL 12 10.0 – 12 t	300/130	400/170	500/225	600/280	800/395	900/450	1000/510	1100/570	1200/620	

Ejector bucket and ripper tooth

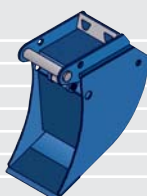
Both can be combined with the Lehmatic® quickcoupler system, just like the backhoe and the tilt buckets: Ripper tooth with exchangeable tooth tip for all demolition and rock applications, and bucket with hydraulic ejector.

Ejector bucket with hydraulic ejector

Excavator	cutting width [mm] / SAE capacity [ltr.]		
MAL 1.6 – 5.0 t	300/54	400/88	
CAL 5.0 – 12.0 t	300/77	350/108	400/125

Ripper tooth with exchangeable tooth tip

Excavator	tooth radius [mm]	angle
RZ 01 1.5 – 2.6 t	400	35°
RZ 03 2.6 – 5.0 t	600	35°
RZ 08 5.0 – 12.0 t	750	35°



Fully equipped: Mini-excavator and compact excavator attachments.

Tilt bucket

State-of-the-art technology and functionality for MG tilt buckets for mini-excavators (1.5 to 5.0 t) and CG tilt buckets for compact excavators (6.0 to 12.0 t):

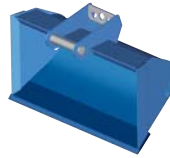
- Rugged, wear-resistant Leborit®5000 (500 HB) cutting edge and side cutting edges
- 1 hydraulic cylinder, pressurizing valve and hoses up to the tilt head
- Large 2 x 50° tilt range
- Compact bucket design for narrow trenches and for excavating alongside walls and houses
- All buckets also available in rigid version



CG tilt bucket



MG tilt bucket



Rigid version



Tilt buckets for 1.5 – 5.0 t mini-excavators

	Excavator	cutting width [mm] / SAE capacity [ltr.]		
MG 5	1.5 – 2.6 t	850/77	1000/92	1200/117
MG 20	2.6 – 5.0 t	1000/150	1200/180	1400/208

Tilt buckets for 6.0 – 12.0 compact excavators

	Excavator	cutting width [mm] / SAE capacity [ltr.]	
CG 5	6.0 – 8.0 t	1500/280	1800/335
CG 10	8.0 – 12.0 t	1500/350	1800/420

No limits to maneuverability: Lehmatic®-Powertilt® system for even more efficiency

Lehmatic® Powertilt® combines all the advantages of a quickcoupler with the features of a tilt motor:

- Work range: 2 x 70° tilt angle (140°)
- Tilt motor sealed for protection against damage
- High retaining forces and rugged design for heavy-duty applications
- Ideal for narrow buckets and compact attachments



Excavator category	2 – 4 t	4 – 7 t	7 – 10 t	9 – 13 t
Lehmatic®	SW 03	SW 03	SW 08	SW 08
Powertilt®	TT - 6	TT - 7	TT - 8	TT - 9
Appr. weight. [kg]	85	140	240	320
Max. pressure	210 bar	210 bar	210 bar	210 bar

Lehnhoff Hartstahl GmbH & Co.
Rungsstrasse 10-14
D-76534 Baden-Baden
Postfach 11 01 65
D-76487 Baden-Baden

Tel. ++49 (0)72 23 / 966 - 140
Fax ++49 (0)72 23 / 966 - 149
E-Mail info@lehnhoff.de
www.lehnhoff.de

